

Theorem Painting of a Yellow Basket of Fruit
Inscribed "Done by Susan R. Hodgson/
Columbia, Va. Sept. 8th"
C.1830 Watercolor on paper 15 3/4" x 12"
(one of a pair)



Carved Bas-Relief Portrait
of a Girl
Pennsylvania, c.1900-20
Walnut, 15" x 14 1/4" x 2"



"Liberty 1855" Album Quilt
Inscribed for "Robert L
McDonald May 5" MD, c.1855
Pieced, appliqued, and quilted
cotton 95" x 95" (detail)



'Schoolhouse' Quilt
American, c.1900-30
Pieced cotton, 84" x 68"

Lift-top Blanket Chest
New Jersey, c.1830
Pine and poplar with the original vibrant
blue on blue grain painted finish.
Ht. 26 1/4", W. 42", D. 21"



Visit us online at
www.OldeHope.com

Patrick Bell / Edwin Hill
P.O. Box 718
New Hope, PA 18938-0718
115 E. 72nd St. NYC
By Appointment 215-297-0200
Fax: 215-297-0300
Email: info@oldehope.com

Items on our website, other than
large furniture, can be seen at our NY
location. Call for an appointment.

EXHIBITING:
57th Annual New Hampshire
Antiques Show
August 7-9, 2014 • Manchester, NH



'Goddess of Liberty' Weathervane
Att. to Cushing & White
Waltham, MA Patented: Sept. 12, 1865
Molded copper and cast zinc with a
weathered surface of verdigris and
traces of old paint and original gilt.
Ht. 35 1/2"

OLDE HOPE
ANTIQUES, INC.

A SUMMER SAMPLING
OF CURRENT INVENTORY



John Brewster, Jr. (1766-1854)
Portrait of "Doct. Lloyd Hixon,
Lowell, Mass"
c.1810-20
oil on canvas, 30" x 25 1/4"
(detail)



Tilt-top Candle Stand
S. E. Pennsylvania, c. 1810
Cherry and pine with an
early finish and a
late 19th c. painted
gameboard top
Ht. 28 1/2"



George Boyd (1873-1941)
Yellowlegs Decoy in original paint
with shoe button eyes
Seabrook, NH



Trick Box with Snake and Hearts
S. E. Pennsylvania, mid 19th c.
Pine with the original painted and
varnished finish. 5 1/4" x 5" x 1 1/4"

ON THE COVER:
A graduated stack of 12 Shaker
oval boxes in their original
painted finish.
Northeast United States,
mid 19th c. Ht. 45"
Assembled over a period
of more than 10 years.

Trade Sign for "I.W.Cotton. Watches,
Clocks, and Jewelry"
New York City, 4th qt. 19th c.
Paint, sand, and gilding on pine.
Ht. 22", L. 122"



© 2014 Olde Hope Antiques



Soap Hollow Chest of Drawers
John Sala (1819-1882) Somerset Co., PA, "1871"
Inscribed: "MANUFACTURED BY JOHN SALA" Pine and poplar with the original red and black painted finish with bronze, silver and polychrome stenciled decoration and porcelain pulls.
Ht. 57 1/2", W. 39 1/2", D. 21"



Hooked Rug of a Dove. American, c.1870-90
Wool and cotton on burlap. 33" x 37 3/4" (detail)



Calligraphic Drawing of Washington on Horseback. Inscribed and signed by "Timothy Newell"
American, c.1870
Pen and ink and watercolor on paper. 14 1/2" X 10 1/2" sight



Fraktur Drawing
Northampton Co, PA
Dated 1824
Watercolor and ink on paper, 12 1/2" x 7 1/2"



"Rochester" Horse Weathervane
Att. to the Gilmanton Iron Works, Rochester, NH
Cast and sheet iron with a weathered finish w/ traces of silver paint.
Ht. 27", L. 36"



Paint-Decorated Door
Pennsylvania, late 18th c.
with a c.1830 vibrant grain-painted finish.
Ht. 77", W. 33 3/4"

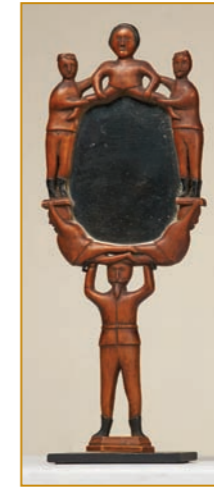
Native American Baskets
Woodlands, New England, mid 19th c.
Woven splint with polychrome swabbed decoration.



Églomisé Mirror
American, c.1830-40
Original painted and stencil-decorated finish and seascape panel.
25" x 13"



An Extraordinary Decorated Box
Maine, c.1830. Pine with the original polychrome decorated finish
Ht. 5 1/4", W. 11 3/4", D. 5 3/4"
Ex Farago collection



Figural Folk Art Mirror
American, c.1860-90
Carved pine with painted details
Ht. 12 1/2"

Unusual Hunter Directional Sign
American, 4th qt. 19th c.
Cast iron with traces of gilding
Ht. 26", W. 27", D. 1"



Large Turned Bowl
In original red paint
PA, c.1820-60
Ht. 9", Diam. 22"



Prancing Carousel Horse
Attributed to Charles W.F. Dare
New York City, c.1875-1901
Exceptional original/early painted finish.
L. 5', Ht. of figure 44" (detail)



Pair of Whirligigs
NY State, 1st qt. 20th c.
Carved pine, leather, cloth tape and tin with an early painted finish.
Ht. 23" & 20"



Portrait of Mrs. Jager
Artist unknown
Prob. Baltimore, c.1815
OOC, 28" x 22"
(one of a pair)

"Dexter" Weathervane
Original label
"CUSHING & WHITE/
WALTHAM, MASS./
PATENT APPLIED FOR."
c.1860-80
Molded copper and cast zinc
L. 45 1/2", Ht. 17 1/2"
(detail)

